

## Swing sink clamp ROTO-ESCAM

Fully automated with retracting and rotating rod  
50-200 kN | 4 models

### Specifications

- Rotating clamping element for DIN 650 T slots or specific slots
- Fully enters and exits the ram T slot
- Clamping and rotation have separate sequences, to prevent any collisions
- Position check using inductive sensors
- All movements are controlled by a PLC module
- Stroke on request



☒static ☐removable ☒bolster ☒ram ☐hydraulic single-acting ☒hydraulic double-acting ☐mechanical ☒automatic

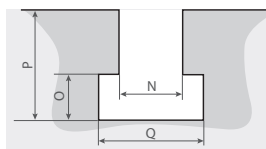
The swing sink clamp is fully built into the bolster or ram. The clamping rod rotates and clamps in the die T slot. It combines rod deployment and rotation sequentially to achieve the clamping. After opening, it is fully removed to free the die movement area. The clamping and rotation functions are separate, guaranteeing operation without risk to the clamp or the die in the event of a jam. All movements are controlled by a PLC module.

### Specifications and dimensions

	ROTO 50	ROTO 80	ROTO 125	ROTO 200
clamping force (kN)	50	80	125	200
max. weight (kg)	7	13	18	33
max. oil volume (cm³)	67	317	636	1265
max flow rate (l/min)	1	1,5	2,5	3,9
max. working pressure (bars)	340	340	340	340
min clamping stroke (C)	32	40	50	63
max clamping stroke (C)	80	100	125	160
A	12	16	20	25
B	20	20	25	25
D	80	100	125	160
E	70	90	110	135
hydraulic connection: G	1/8"	1/4"	3/8"	3/8"
H	110	140	175	220
I	6xØ9	6xØ11	4xØ13	4xØ13
J	Ø 95	Ø 120	Ø 150	Ø 190
K	Ø 25	Ø 32	Ø 40	Ø 50
L	115	130	150	174

All dimensions are in millimeters.

### DIN 650 T slot



N	18	22	24	28	36
O	12	16	18	20	25
P	30	38	42	48	60
Q	30	37	42	46	56

Available for DIN 650 T22 to T36 slots.

Specific dimensions on request. Check actual dimensions.

### Purchase order reference :

**ROTO** - clamping force in kN - Stroke - T slot dimension

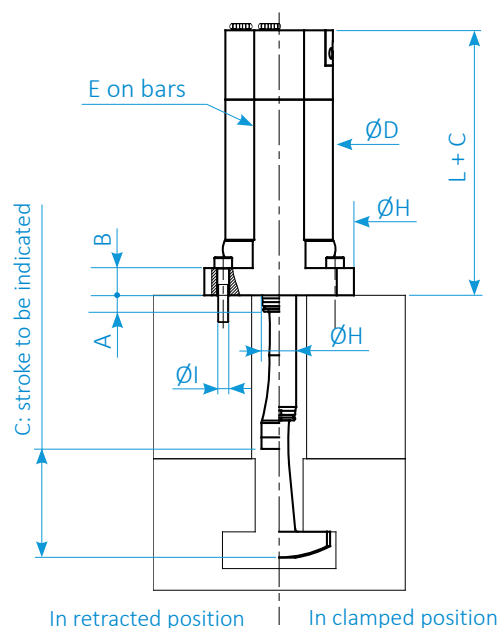
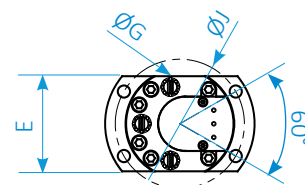
**Example :** ROTO- 50- 63- T36

SERAPID France  
+33 (0)2 32 06 35 60  
info-fr@serapid.com

SERAPID Deutschland GmbH  
+49 (0)7931 96 47-0  
info-de@serapid.com

SERAPID Ltd  
+44 (0)1359 233335  
info-uk@serapid.com

SERAPID INC.  
+1 586 274 0774  
info-us@serapid.com



### Hydraulic configuration :

**Important information :** three hydraulic circuits are needed to use this clamp. The hydraulic source used must allow a high flow rate at low pressure. Power pack on request.

