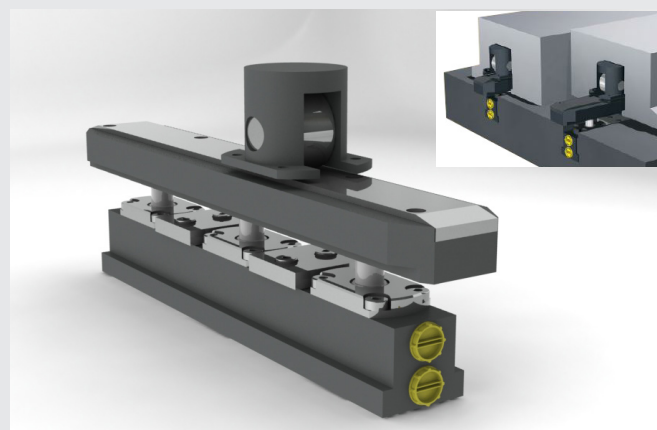


Roller bar clamp LSHP

Double T slot with rolling track
For GP45 load bearing rollers
60-100 kN | 2 models

Specifications

- Fixed in the bolster T slot, the bar clamps the die using its T slots
- Movement of the die on the bar clamps using the GP45 load bearing rollers
- Hydraulic clamping and lifting
- Several bars can be combined to cover the entire bolster length
- Fully embedded



LSHP roller bar clamps are composed of two bars placed one on top of the other facing each other and inserted into T slots. The lower part is installed in the bolster T slot, the upper part is inserted in the die T slot. In the open top position, the upper bar can be used as a track on which the die can be rolled (see Technical sheet 070-05 GP45 load bearing rollers). LSHP roller bar clamps can be used to clamp dies that cover the entire bolster surface.

Specifications and dimensions

	LSHP 3	LSHP 5
L (mm)	400	646
A (mm)	342	588
clamping force (kN)	60	100
Static load capacity (kN)	84,7	141
weight (kg)	11,5	18,5
oil volume (cm ³)	17	28
Max flow rate (l/min)	3,5	5,9
max. working pressure (bar)	400	400
number of pistons	3	5
stroke	6,5	6,5

All dimensions are in millimetres.

Hydraulic connection : G1/4", UNF 9/16" available as an option

Important information : installing LSHP roller bar clamps requires slots and drill holes on the bolster and rolling bolster. Manufactured by request.

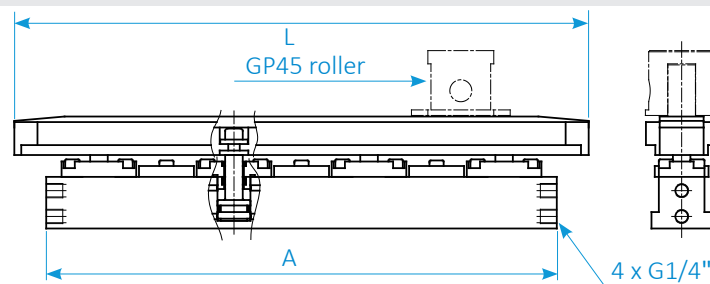
For the drawings and user instructions for GP45 load bearing rollers, see technical sheet 070-05 GP45.

Purchase order reference

LSHP - 3 / 5 - A / B - Z - S

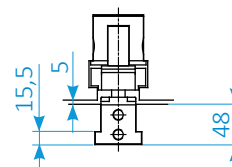
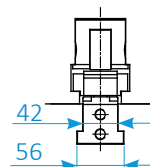
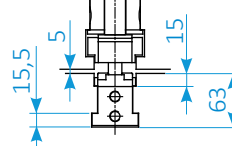
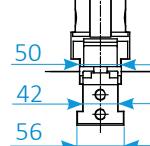
↑ for specific dimensions
 ↑ (attach a drawing)
 ↑ hydraulic connection dimension
 ↑ fixing type

Example : LSHP 5 - A G1/4"



Clamped

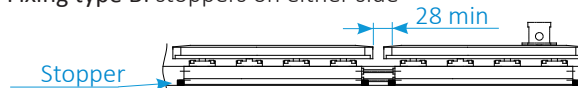
Unclamped



Fixing type A: clamp



Fixing type B: stoppers on either side



If at least two bars are combined, each one must be fixed to prevent any strain on the hydraulic piping.

SERAPID France
+33 (0)2 32 06 35 60
info-fr@serapid.com

SERAPID Deutschland GmbH
+49 (0)7931 96 47-0
info-de@serapid.com

SERAPID Ltd
+44 (0)1359 233335
info-uk@serapid.com

SERAPID INC.
+1 586 274 0774
info-us@serapid.com