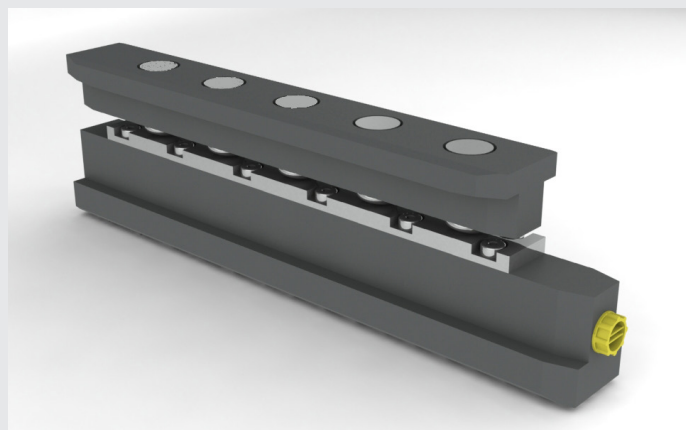


Bar clamp LSH

Double T slot
30-156 kN | 6 models

Specifications

- Manually inserted into the bolster and die T slots or onto the ram
- Hydraulic clamping, mechanical opening using the spring force
- Several units can be combined
- Can be combined with LSGH and LSHP type clamps
- Fully embedded
- Clamping of dies covering the entire bolster
- Standard working temperature of up to 70 °C, 160 °C with Viton seals



☒static ☒removable ☒bolster ☒ram ☒hydraulic single-acting ☐hydraulic double-acting ☐mechanical ☐automatic

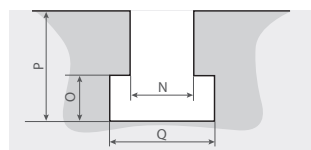
Specifications and dimensions

	LSH 22		LSH 28		LSH 36	
DIN 650 slot	T 22		T 28		T 36	
number of pistons	5	12	5	12	5	12
length (L - mm)	260	610	260	610	260	610
clamping force (kN)	30	72	45	108	65	156
weight (kg)	4	9,5	4,6	11	5,5	13
oil volume (cm ³)	4	9	7	16	9	20
max flow rate (l/min)	1	2,4	1,75	4,2	2,25	5,4
clamping pressure (bar)	400		400		400	
A	21,5		27,5		35,5	
B	35		44		56	
stroke C	4		4		4	
G (tolerance ± 1 mm)	14		18		23	
H	10		14		19	

All dimensions are in millimeters.

Hydraulic connection : G1/8", UNF 7/16" available as an option

DIN 650 T slot

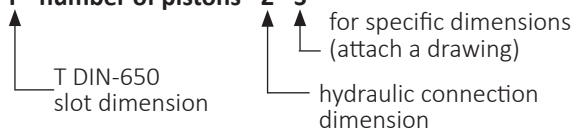


N	18	22	24	28	36
O	12	16	18	20	25
P	30	38	42	48	60
Q	30	37	42	46	56

Available for DIN 650 T22, T28 and T36 slots. Specific dimensions on request. Check actual dimensions before ordering.

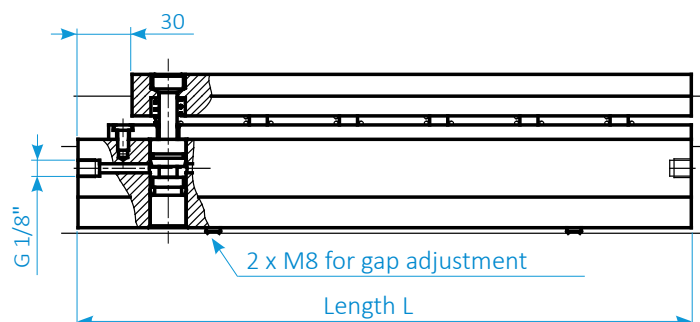
Purchase order reference

LSH - T - number of pistons - Z - S

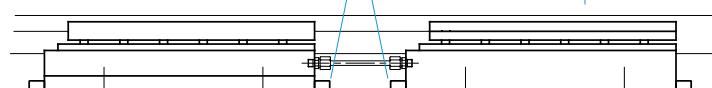
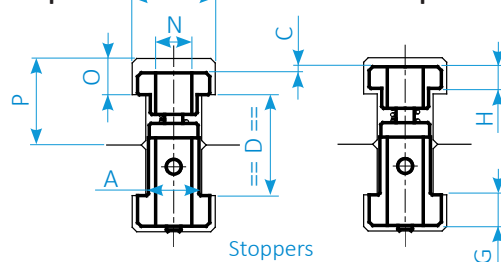


Example : LSH 28- 5 G1/8"

LSH bar clamps use 2 DIN 650 T slots in the bolster and the die. They allow the clamping of dies that cover the entire bolster or ram and are especially suited to this use. They can be removable or static. The clamping force is provided by hydraulic pressure. The clamp is opened using springs.



Clamped Unclamped



The clamps must be immobilised in the long movement direction (stoppers) but not blocked, if several clamps are coupled. For more details on clamp fixing, refer to our drawings ref 070-00-01 (on request) to avoid any strain on the hydraulic piping.

SERAPID France
+33 (0)2 32 06 35 60
info-fr@serapid.com

SERAPID Deutschland GmbH
+49 (0)7931 96 47-0
info-de@serapid.com

SERAPID Ltd
+44 (0)1359 233335
info-uk@serapid.com

SERAPID INC.
+1 586 274 0774
info-us@serapid.com