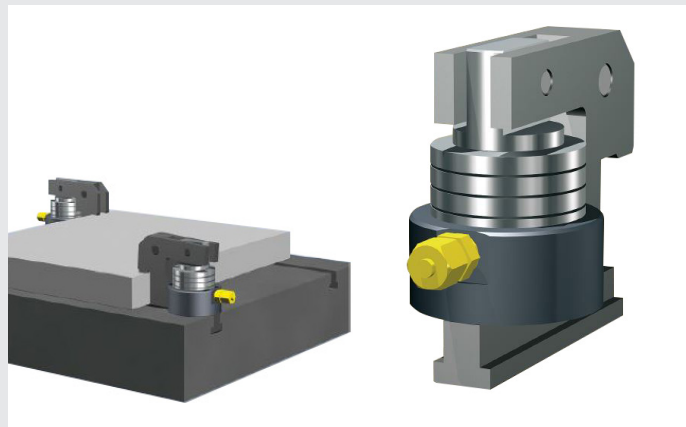


## Lever clamp BCM

Individual clamping height  
20-60 kN | 3 models

### Specifications

- Mechanical clamping using spring force, hydraulic release
- Manually installed in the T slot
- Clamping height can reach a maximum of 80 mm
- Standard working temperature of up to 70 °C, 160 °C with Viton seals



☐ static ☒ removable ☒ bolster ☒ ram ☒ hydraulic single-acting ☐ hydraulic double-acting ☒ mechanical ☐ automatic

BCM clamps are used to clamp flat edged dies. They are manually installed on the bolster or the ram. The clamping force is provided by a set of spring washers. In the clamping position, the BCM is completely stand-alone and requires no permanent hydraulic connection. The hydraulic release source can be a basic hand pump or any available unregulated source capable of supplying the required pressure.

### Specifications and dimensions

	BCM 20	BCM 40	BCM 60
clamping force (kN)	20	40	60
weight (kg)	3	5	8
max. clamping height	80	80	80
release pressure (bar)	100	140	180
Ø A	80	90	90
B	145	160	170
C	117	117	117
D	38	68	68

All dimensions are in millimeters.

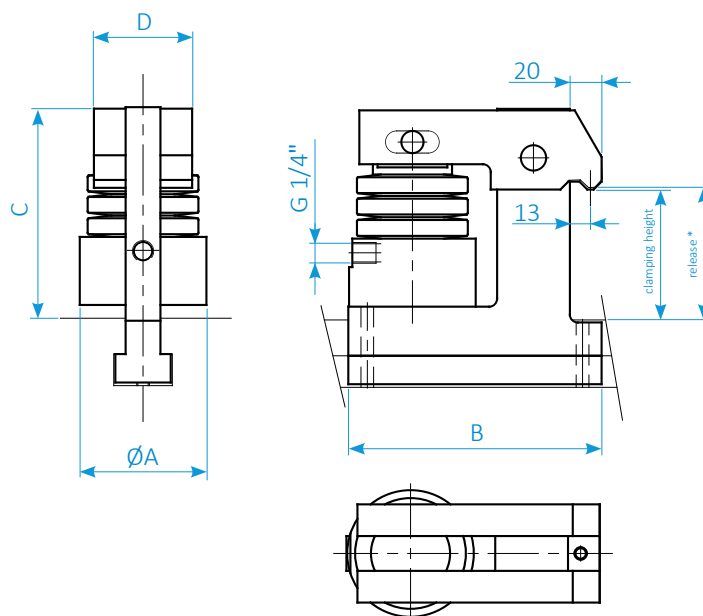
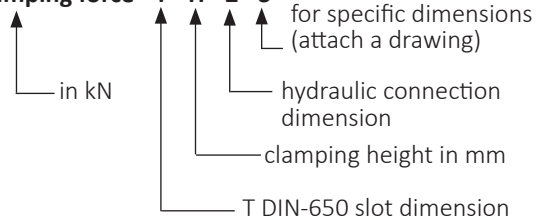
Standard hydraulic connection G1/4", UNF 9/16" available as an option.

**Important information** : the clamp will be manufactured to the clamping height you indicate. This information must be included on the purchase order.

The tolerance for the die height is  $\pm 0.3$  mm.

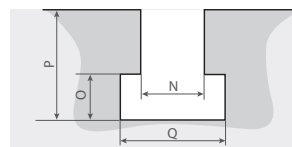
### Purchase order reference

BCM - clamping force - T - H - Z - S



\* Release = clamping height + 1 mm

### DIN 650 T slot



N	18	22	24	28	36
O	12	16	18	20	25
P	30	38	42	48	60
Q	30	37	42	46	56

Available for DIN 650 T22 to T36 slots. Specific dimensions on request. Check actual dimensions before ordering.

**Example** : BCM 20 T28 H50 G1/4"

SERAPID France  
+33 (0)2 32 06 35 60  
info-fr@serapid.com

SERAPID Deutschland GmbH  
+49 (0)7931 96 47-0  
info-de@serapid.com

SERAPID Ltd  
+44 (0)1359 233335  
info-uk@serapid.com

SERAPID INC.  
+1 586 274 0774  
info-us@serapid.com