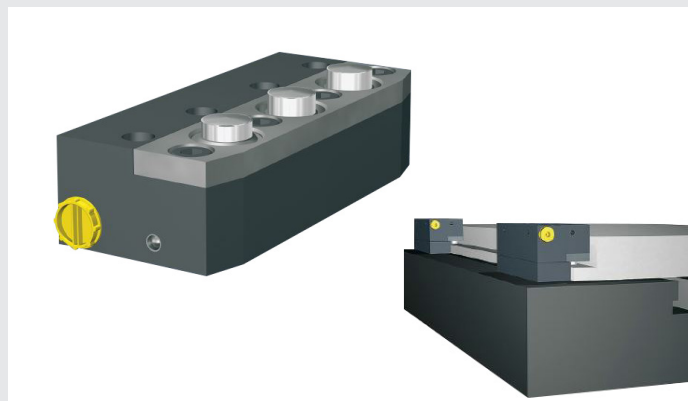


Ledge clamp PHL

Side clamp, easy to install
85-250 kN | 3 models

Specifications

- Static side clamp
- Several clamps can be combined in lines
- Variable clamping height depending on the blocks used
- Location for standardised dies on the bolster
- Location on the ram possible when the ram of press can be electronically controlled
- Standard working temperature of up to 70 °C, 160 °C with Viton seals



☒static ☐removable ☒bolster ☒ram ☒hydraulic single-acting ☐hydraulic double-acting ☐mechanical ☒automatic

THL ledge clamps are installed on the flat edges of dies, or on dies that have a low edge. The clamps are usually installed on the bolster. The ledge clamp can be installed on the ram. Clamping height can vary by the use of different height blocks. Several clamps can be combined in a line to have several clamping points depending on the dimension of the clamped die.

Specifications and dimensions

	PHL 3	PHL 5	PHL 9
number of pistons	3	5	9
clamping force (kN)	85	140	250
weight (kg)	4,2	6,6	11,6
oil volume (cm³)	14,8	24,7	44,5
max flow rate (l/min)	3,5	5,9	10,6
max. working pressure (bar)	400	400	400
ref for the block	E3 H...	E5 H...	E9 H...

All dimensions are in millimeters.

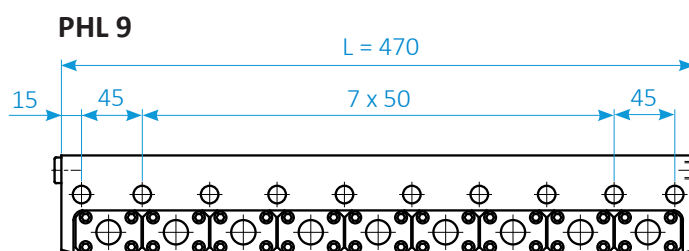
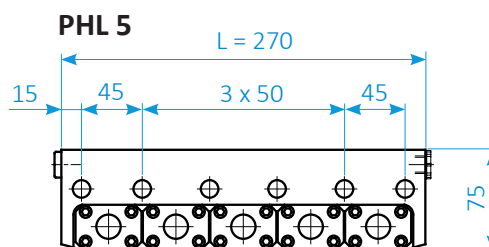
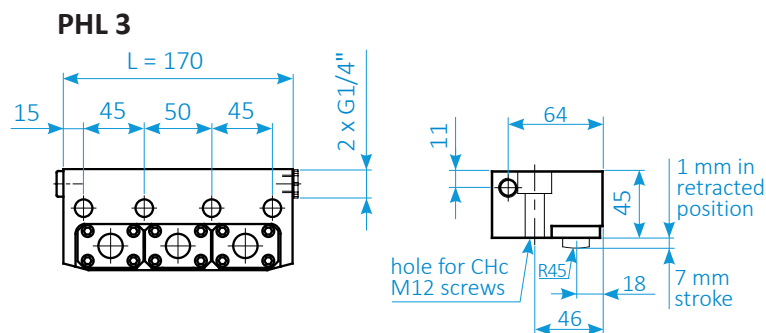
Hydraulic connection G 1/4», UNF 9/16» as an option.

Purchase order reference

Clamp : PHL number of pistons - **Z** hydraulic connection

Block (spacer) : **E** number of pistons - **H** block height in mm

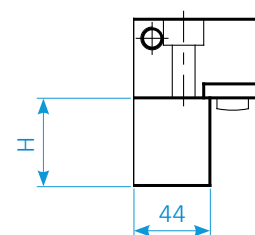
Example : PHL 3 E3 H50 G1/4"



Option

Block height H :

Height H must be indicated on the purchase order.



SERAPID France
+33 (0)2 32 06 35 60
info-fr@serapid.com

SERAPID Deutschland GmbH
+49 (0)7931 96 47-0
info-de@serapid.com

SERAPID Ltd
+44 (0)1359 233335
info-uk@serapid.com

SERAPID INC.
+1 586 274 0774
info-us@serapid.com